

PSECUSM Newsletter

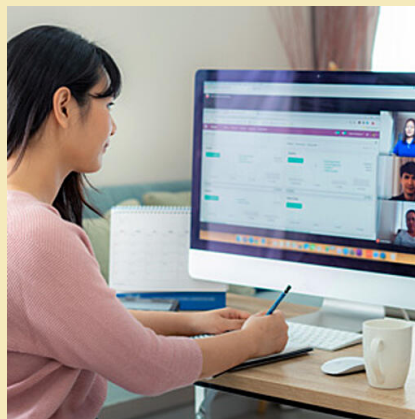


A Message From Our President & CEO



I'm proud to announce that *your* credit union, PSECU, has been recognized as a Best-In-State Credit Union for the third year in a row by Forbes Magazine.

[READ MORE](#)



Build a Home Office on a Budget

Many of us have, or will be, going back to the office, but it isn't necessarily a return to the old "normal." If you're switching to a remote or hybrid work setup, check out these ideas for building or redesigning a home office space without breaking your budget.

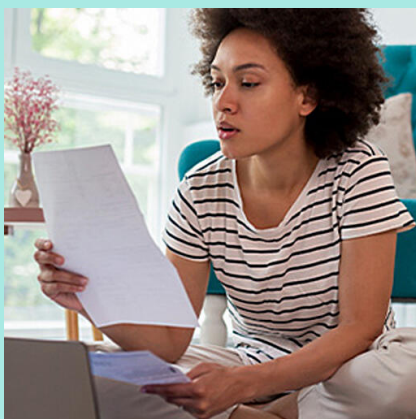
[READ MORE](#)



Make Cash Rewards a Part of Your Routine

As school, youth sports, and time in the office pick back up, you'll likely be putting more miles on your car. Don't miss out on a chance to earn cash rewards if you qualify for our [Pay at the Pump Fuel Purchase Cash Offer](#) with your Classic Card or Founder's Card through September 30, 2021.

Plus, as your family gets back on the road, don't miss these tips for [reducing the cost of car maintenance](#).



Prepare for Financial Success in College

Headed back to campus this fall or have a child who is? We've compiled a list of five money moves college students should make before kicking off the fall semester.

[READ MORE](#)

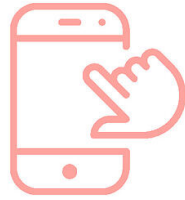
Hear From the PSECU Scholarship Winners

We're wishing our 2021 scholarship winners a smooth start to their first year of college this fall! [Watch this short video](#) about them, their goals, and how the PSECU Scholarship is helping them achieve more.

Know a graduating high school senior? We're now accepting applications for our [2022 scholarship](#).

Have You Tried These Updated Services?

We're always looking for ways to improve the services we offer you. Check out these recent updates and how they can help enhance your money management routine.



ENHANCED ONLINE BANKING

Our new online banking experience makes managing your money easier than ever. [Get started today.](#)



NEW WEALTH MANAGEMENT SERVICES PROVIDER

Earlier this year, we announced a new agreement with LPL Financial, LLC to help our members work toward their financial goals. [Learn more.](#)



SMALL BUSINESS ESSENTIALS

Dream of opening your own business? Our Online Learning Center now offers resources to help you get started. [Check them out here.](#)

Did You Know? The new technology we chose for our online banking platform gives us the opportunity to continue enhancing our system in the future. The platform was designed to match our mobile app to provide a seamless experience for you, allowing you to easily manage your money across devices. So, what are you waiting for? [Make the switch](#) today!



Please don't reply to this email. For account questions or transaction requests, send a secure message through [online banking](#) or mobile by selecting Support, then Secure Messages from the drop-down menu at the top left. Or, call us at [800.237.7328](tel:800.237.7328).

We occasionally send messages to members and non-members containing information on PSECU products, services, promotions, and enhancements that may be of interest.

PSECU is committed to protecting the privacy of our members' financial information. We strive to ensure that our members can do business safely and securely over the Internet. If you're unsure of the validity of this email, please contact us at [800.237.7328](tel:800.237.7328). PSECU's Privacy Policy and practices can be found at psecu.com/privacy.

PSECU, 1500 Elmerton Avenue, Harrisburg, PA 17110

[Unsubscribe](#) [Manage preferences](#)

© 2021 PSECU. All rights reserved.

[Insured by NCUA](#). [Equal Housing Lender](#).

RITM0015415a